

# BOARD UPDATE

PROSPER INDEPENDENT SCHOOL DISTRICT



## JOYCE HALL ELEMENTARY SCHOOL (ES #15)

AS OF APRIL 2022

### WORK COMPLETED AND ONGOING:

#### Site

- Site landscaping ongoing
- Final grading for remaining flatwork placement ongoing

#### Building

- Walls around storm shelter mezzanine are complete
- Gymnasium wall padding and basketball goal installation ongoing
- Painting ongoing at the clerestory and cafeteria
- Ceiling grid installation ongoing – Area 4
- 47 Roof Top Units have been installed
- Wall tile installation in corridors and rest rooms ongoing – Areas 2, 3 and 4
- MEP installation ongoing and wire being pulled from main electrical room to all areas

Aerial - Looking Northeast





# BOARD UPDATE

PROSPER INDEPENDENT SCHOOL DISTRICT



## JOYCE HALL ELEMENTARY SCHOOL (ES #15)

AS OF APRIL 2022

Aerial - Looking Northwest



Aerial - Looking Southeast





# BOARD UPDATE

PROSPER INDEPENDENT SCHOOL DISTRICT



## JOYCE HALL ELEMENTARY SCHOOL (ES #15)

AS OF APRIL 2022

Aerial - Looking Southwest



Main Entry Tower





# BOARD UPDATE

PROSPER INDEPENDENT SCHOOL DISTRICT



## JOYCE HALL ELEMENTARY SCHOOL (ES #15)

AS OF APRIL 2022

Gymnasium (Tornado Shelter)



Front Office Reception Area





# BOARD UPDATE

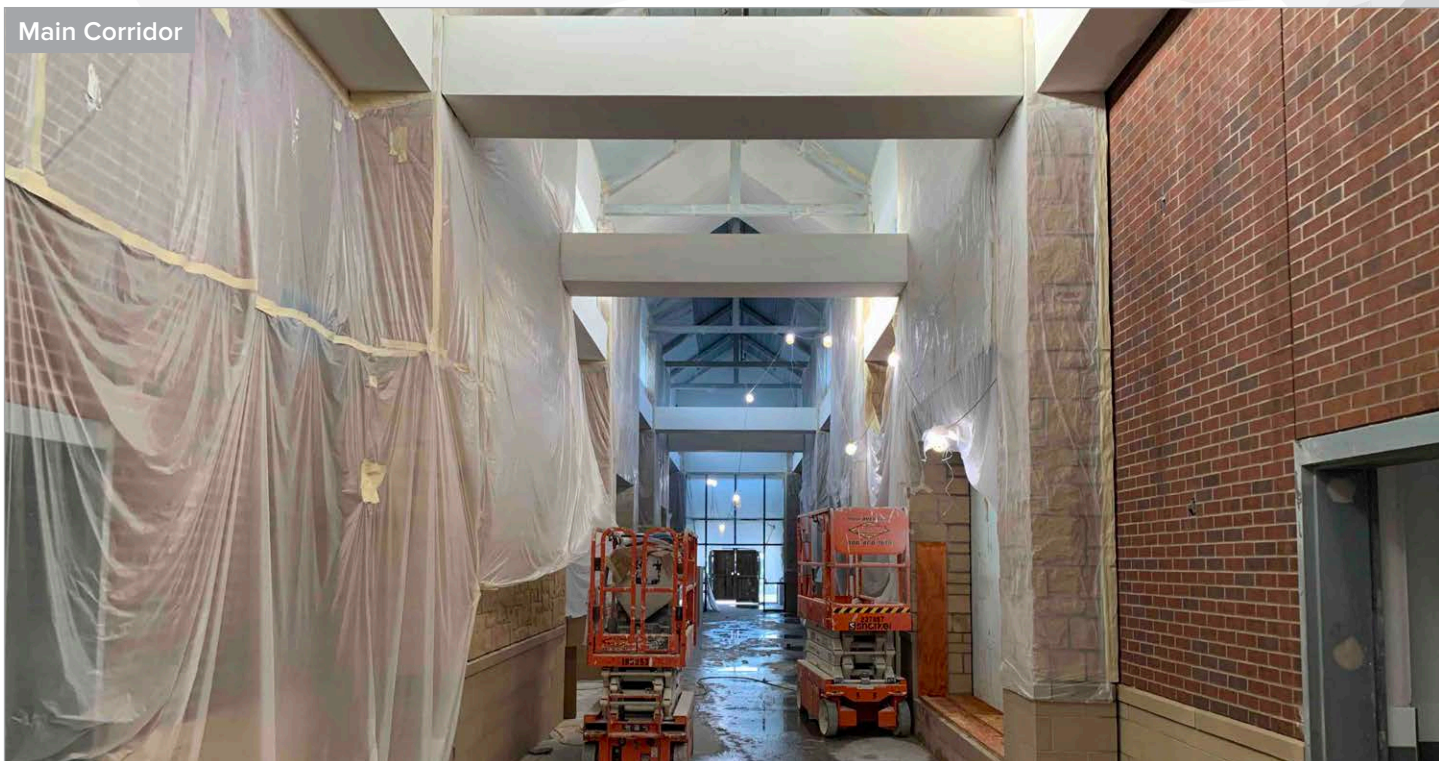
PROSPER INDEPENDENT SCHOOL DISTRICT



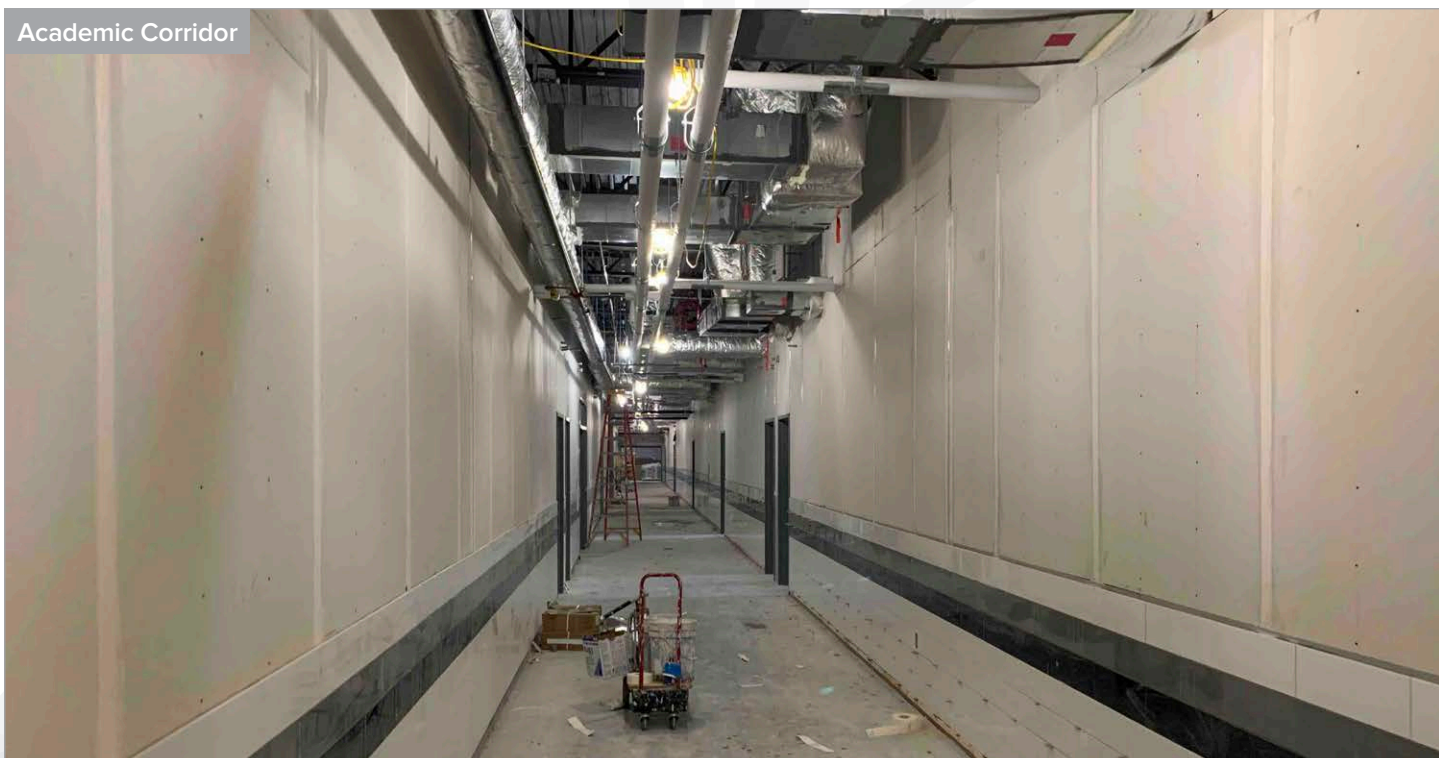
## JOYCE HALL ELEMENTARY SCHOOL (ES #15)

AS OF APRIL 2022

Main Corridor



Academic Corridor





# BOARD UPDATE

PROSPER INDEPENDENT SCHOOL DISTRICT



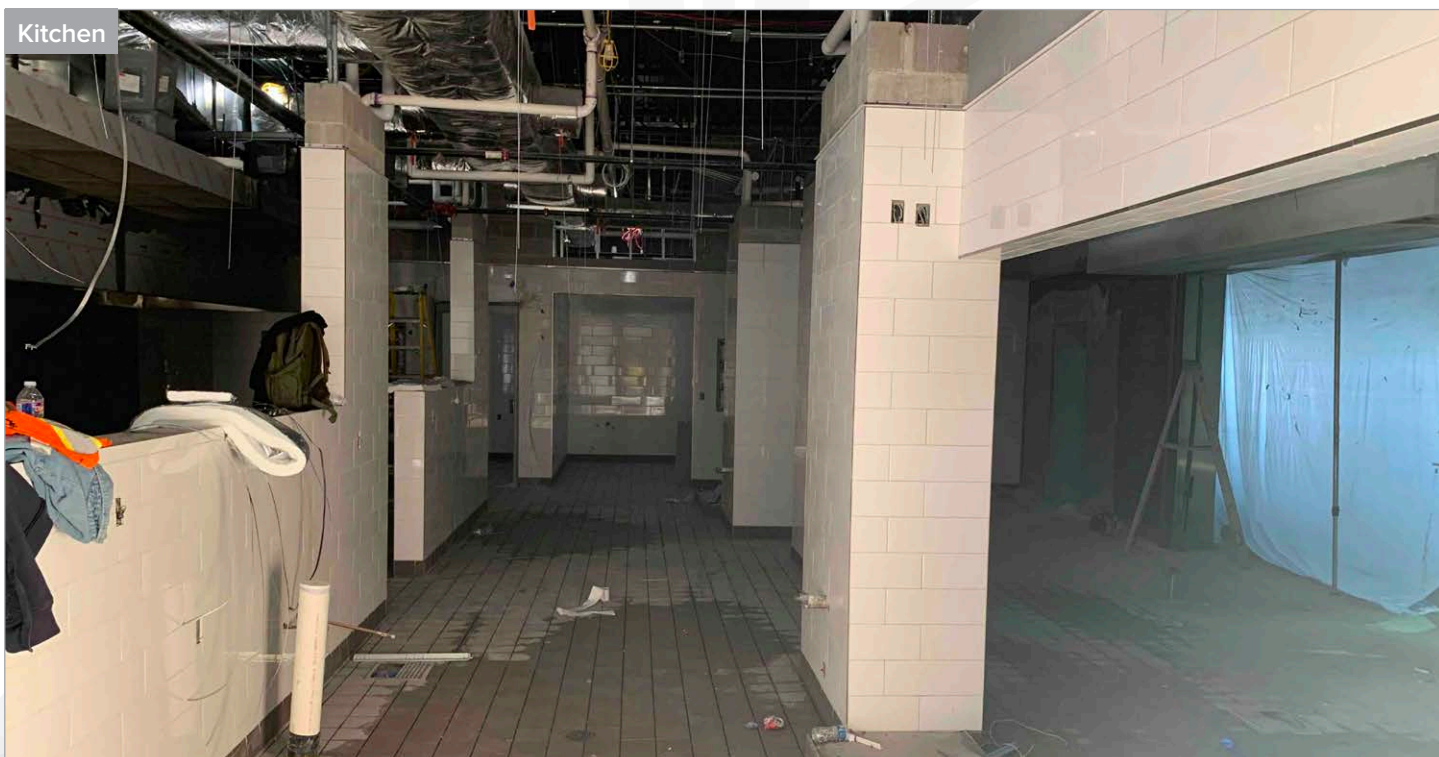
## JOYCE HALL ELEMENTARY SCHOOL (ES #15)

AS OF APRIL 2022

Cafetorium



Kitchen





# BOARD UPDATE

PROSPER INDEPENDENT SCHOOL DISTRICT



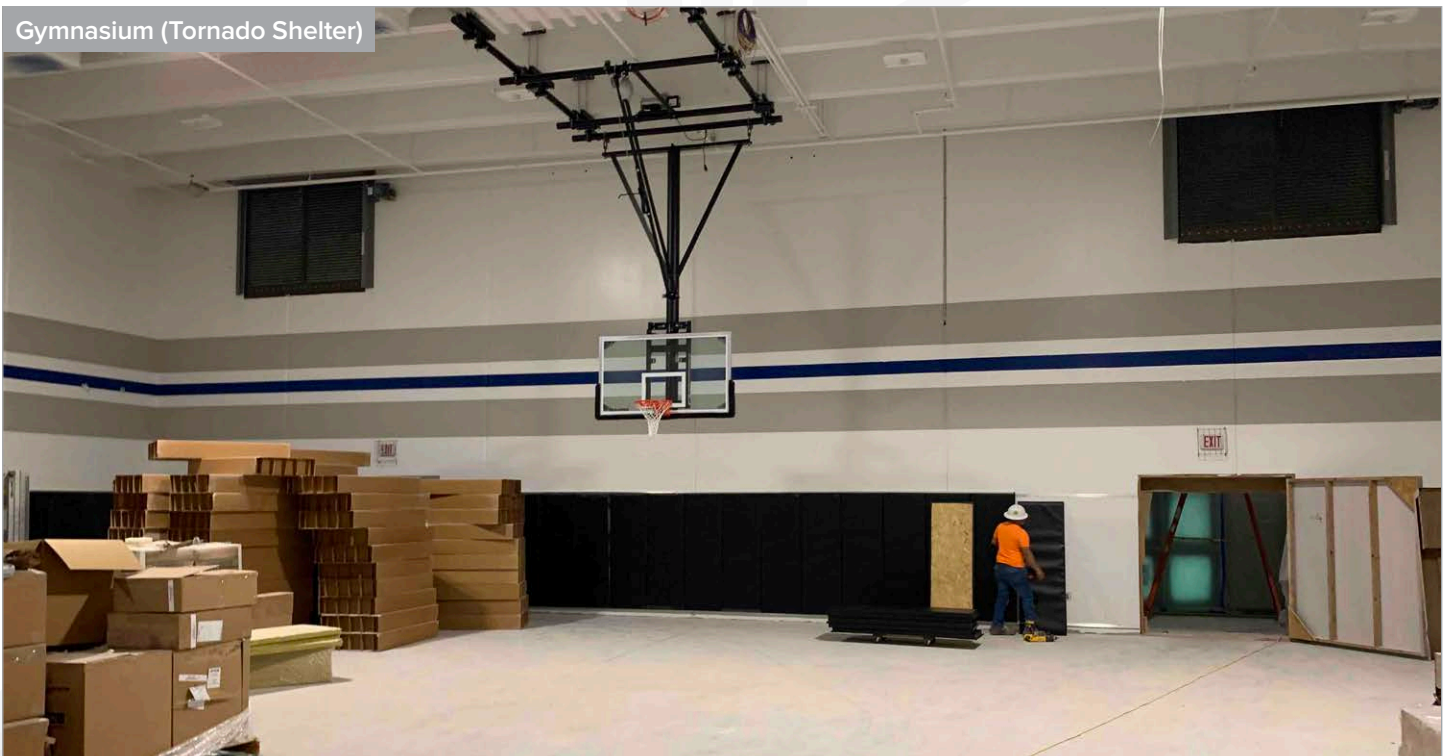
## JOYCE HALL ELEMENTARY SCHOOL (ES #15)

AS OF APRIL 2022

Freezer/Cooler Installation



Gymnasium (Tornado Shelter)





# BOARD UPDATE

PROSPER INDEPENDENT SCHOOL DISTRICT



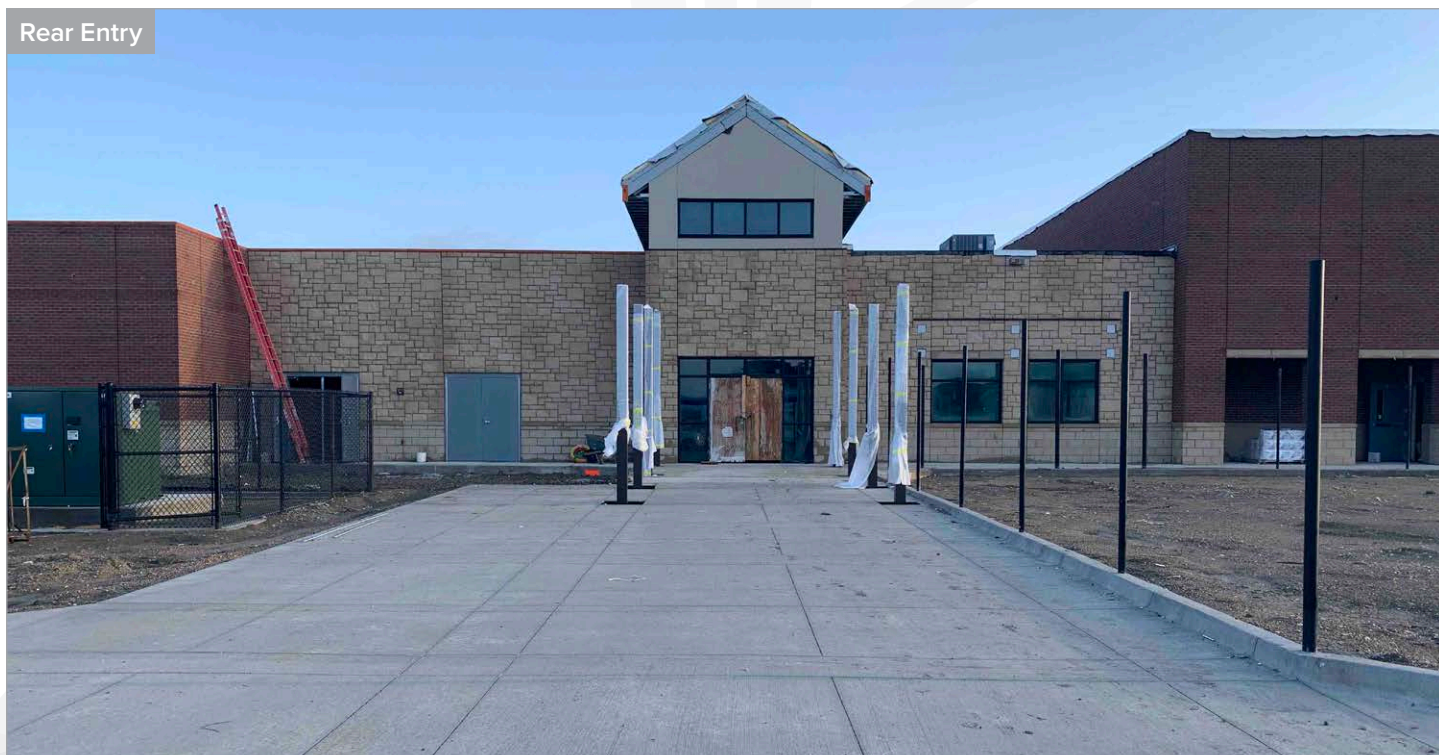
## JOYCE HALL ELEMENTARY SCHOOL (ES #15)

AS OF APRIL 2022

Playground Area



Rear Entry





# BOARD UPDATE

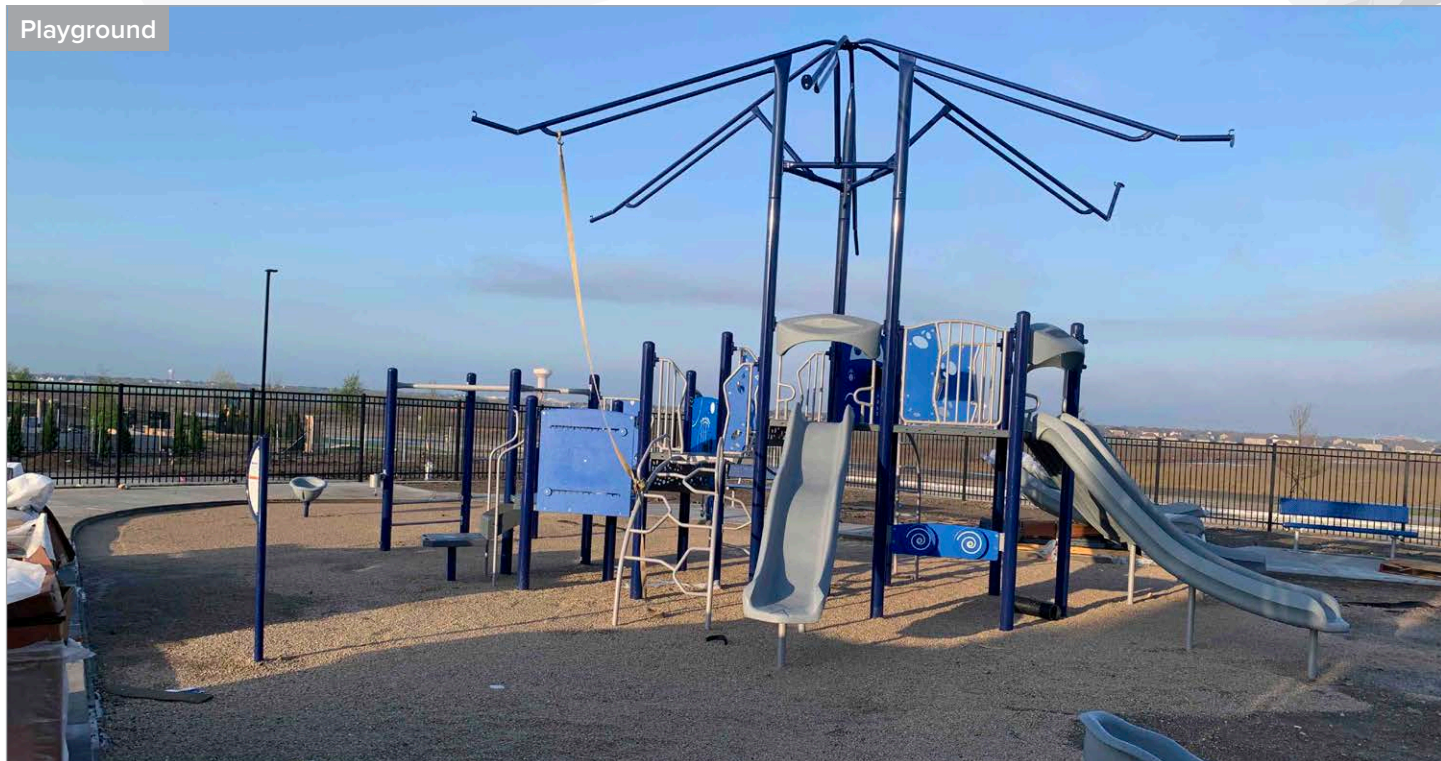
PROSPER INDEPENDENT SCHOOL DISTRICT



## JOYCE HALL ELEMENTARY SCHOOL (ES #15)

AS OF APRIL 2022

Playground





# BOARD UPDATE

PROSPER INDEPENDENT SCHOOL DISTRICT



## WALNUT GROVE HIGH SCHOOL (HS#3)

AS OF APRIL 2022

### WORK COMPLETED AND ONGOING:

#### Site

- Installation of retaining wall D ongoing
- Installation of backfill material at retaining wall C (baseball) ongoing
- Site grading for sidewalks ongoing
- Site light pole installation ongoing
- Detention pond retaining wall installation ongoing
- Installing the headwall at the detention pond complete
- Installation of outfall at the detention pond ongoing
- Sports field contractor has started installation of footers
- Beginning cut to grade at football field
- Fencing has been installed on top of retaining wall A and ongoing at retaining wall B
- Pump house and ticket booth CMU is ongoing

#### Main Building

- MEP overhead rough-in ongoing – Areas A and B
- Fireproofing patching ongoing on first floor – Area B
- Structural steel erection ongoing – Areas C, D, Q and R
- Structural steel erection beginning – Area P
- Elevated slab to be complete in the next two weeks – Area C
- Roofing installation ongoing – Area A
- Installation of hangers and supports for MEP ongoing – Area C
- CMU walls ongoing – Areas P, Q, and R
- Fire sprinkler ongoing – Areas A and B
- Exterior sheathing ongoing – Area B
- Glass and glazing ongoing – Area A
- Air barrier installation ongoing – Areas A and B
- Slab installation to be completed this month – Areas D and J

#### Multipurpose Facility (MPF) and Ancillary Buildings

- Erection of main steel super structure ongoing – Area U
- CMU wall installation ongoing – Area T

Aerial - Looking Northeast





# BOARD UPDATE

PROSPER INDEPENDENT SCHOOL DISTRICT



## WALNUT GROVE HIGH SCHOOL (HS#3)

AS OF APRIL 2022

Aerial - Looking Northwest



Aerial - Looking Southeast





# BOARD UPDATE

PROSPER INDEPENDENT SCHOOL DISTRICT



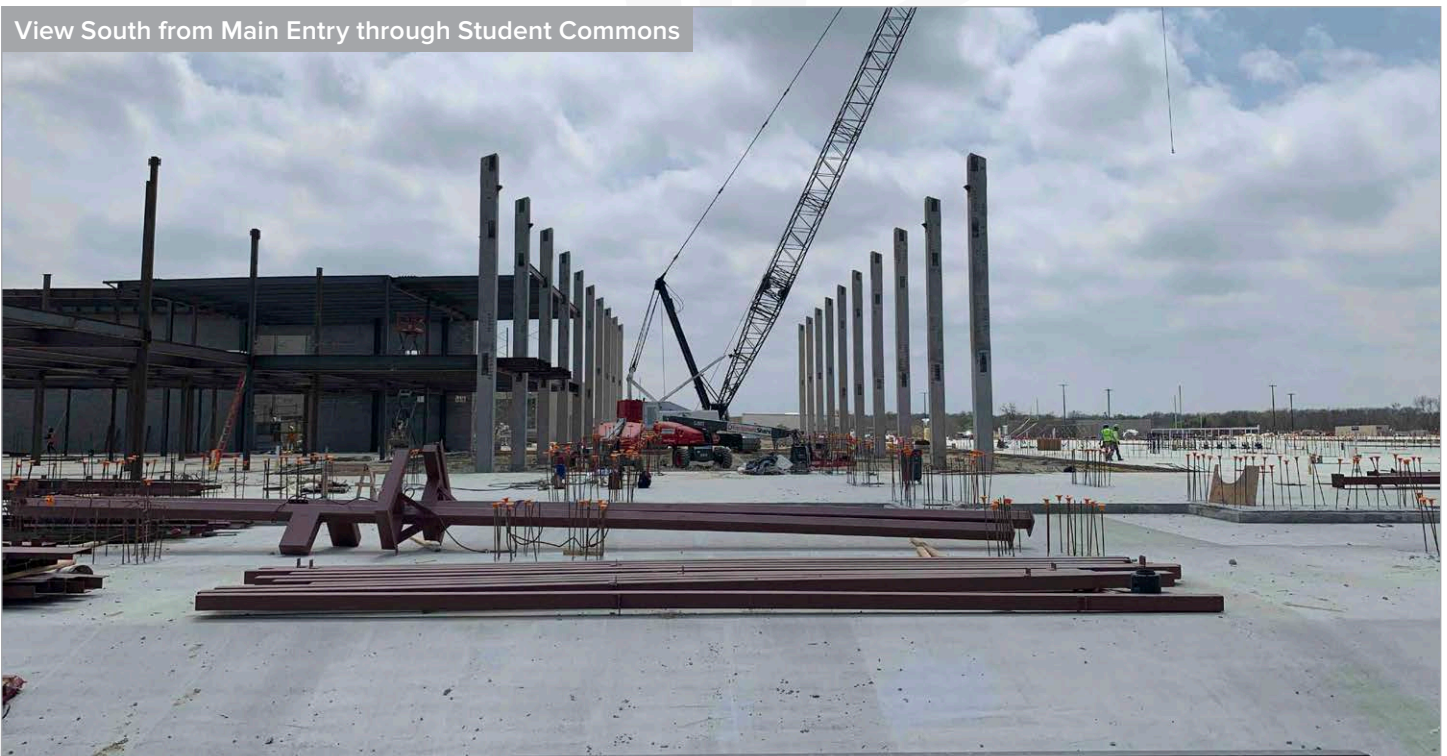
## WALNUT GROVE HIGH SCHOOL (HS#3)

AS OF APRIL 2022

Aerial - Looking Southwest



View South from Main Entry through Student Commons





# BOARD UPDATE

PROSPER INDEPENDENT SCHOOL DISTRICT



## WALNUT GROVE HIGH SCHOOL (HS#3)

AS OF APRIL 2022

Structural Steel Sequence Staging and Erection



Exterior Sheathing at East Academic Wing





# BOARD UPDATE

PROSPER INDEPENDENT SCHOOL DISTRICT



## WALNUT GROVE HIGH SCHOOL (HS#3)

AS OF APRIL 2022

Stair Tower at East Academic Wing



Auditorium Entry





# BOARD UPDATE

PROSPER INDEPENDENT SCHOOL DISTRICT



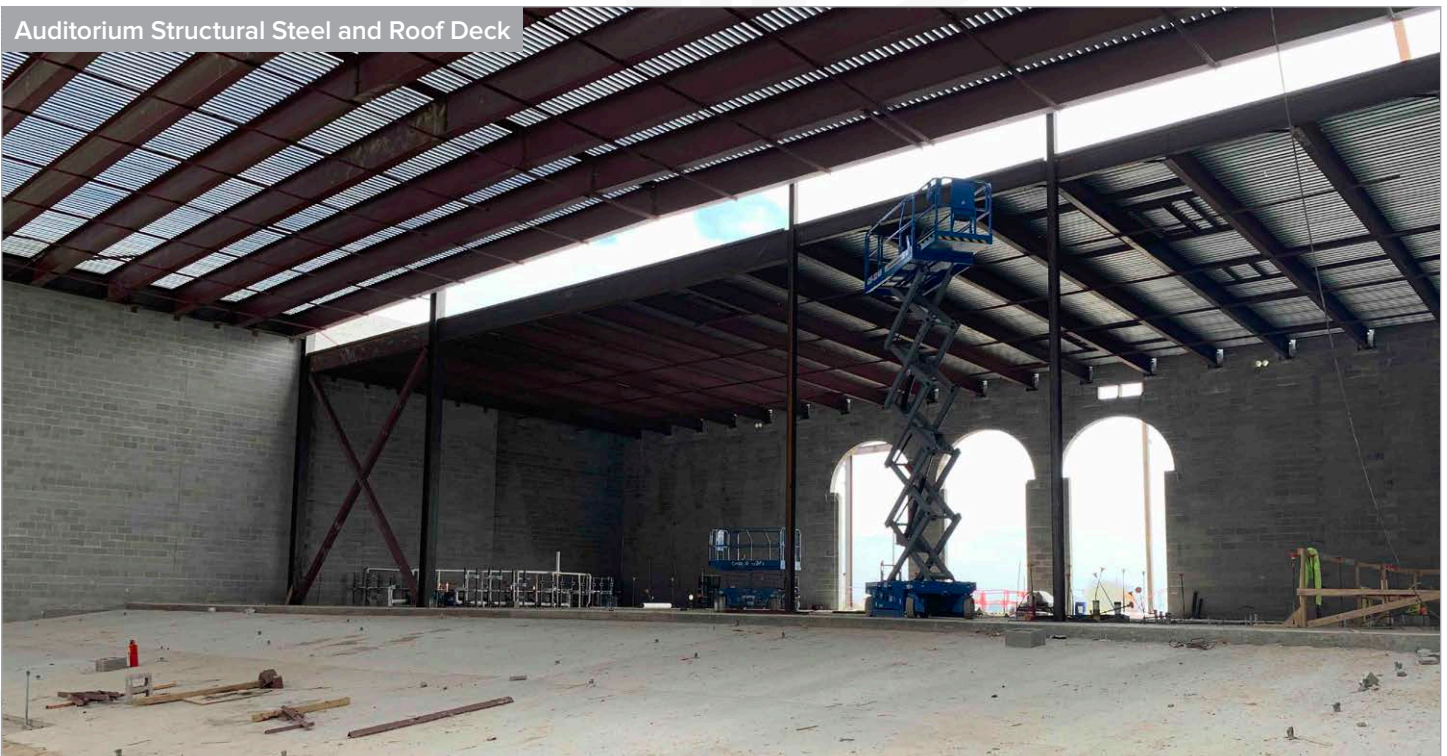
## WALNUT GROVE HIGH SCHOOL (HS#3)

AS OF APRIL 2022

Auditorium



Auditorium Structural Steel and Roof Deck





# BOARD UPDATE

PROSPER INDEPENDENT SCHOOL DISTRICT



## WALNUT GROVE HIGH SCHOOL (HS#3)

AS OF APRIL 2022

Main Street Corridor



Academic Wing Corridor





# BOARD UPDATE

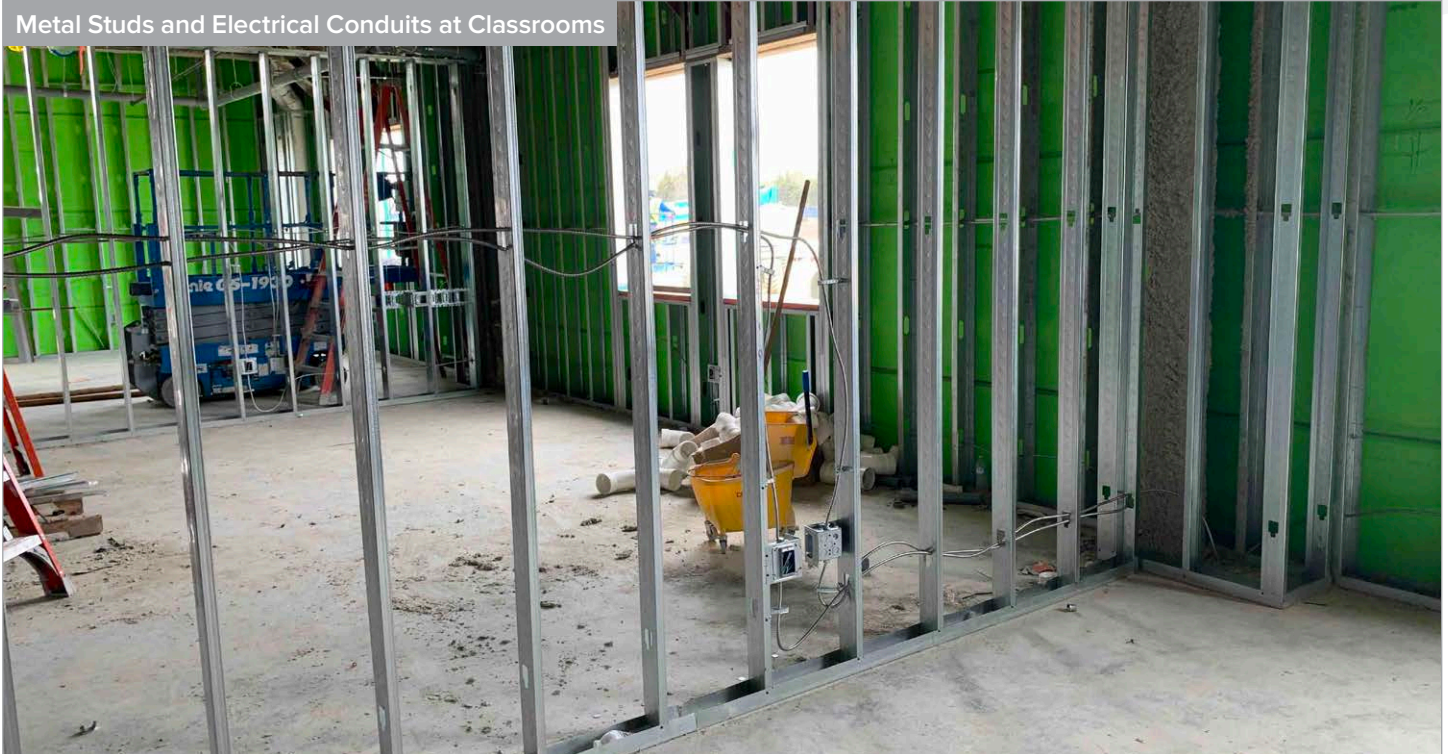
PROSPER INDEPENDENT SCHOOL DISTRICT



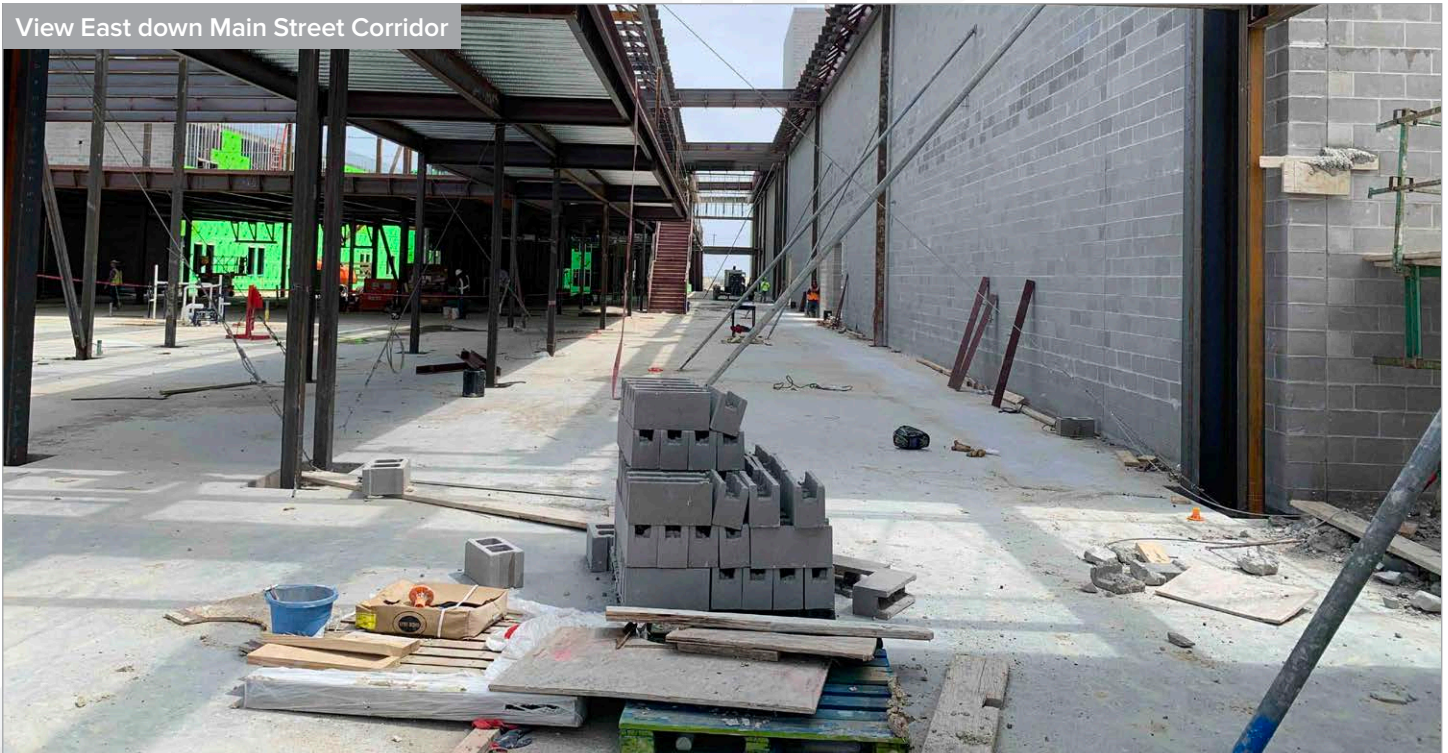
## WALNUT GROVE HIGH SCHOOL (HS#3)

AS OF APRIL 2022

Metal Studs and Electrical Conduits at Classrooms



View East down Main Street Corridor





# BOARD UPDATE

PROSPER INDEPENDENT SCHOOL DISTRICT



## WALNUT GROVE HIGH SCHOOL (HS#3)

AS OF APRIL 2022

Band Hall



Structural Steel for Art Classrooms





# BOARD UPDATE

PROSPER INDEPENDENT SCHOOL DISTRICT



## WALNUT GROVE HIGH SCHOOL (HS#3)

AS OF APRIL 2022

Vet Tech and Horticulture



Steel Erection at Multipurpose Facility (MPF)





# BOARD UPDATE

PROSPER INDEPENDENT SCHOOL DISTRICT



## WALNUT GROVE HIGH SCHOOL (HS#3)

AS OF APRIL 2022

CMU Wall installation at Multipurpose Facility (MPF)



Backfilling Retaining Wall C at Baseball Field

